

KWAZULU-NATAL ZULULAND & MAPUTALAND 5-DAY TOUR

Zululand – Maputaland – North Coast

BIRDING AND WILDLIFE SAFARI

**01 January – 31 December 2022
5 Days, 4 Nights**

TRIP GUIDE



KWAZULU-NATAL ZULULAND AND MAPUTALAND 5-DAYS **Zululand – Maputaland – North Coast**

1. Tour Summary

Duration: 5 days, 4 nights.

Price: **ZAR 14,995.00 per person sharing, with a ZAR 1,950.00 single supplement.**

Price may be subject to change based on factors beyond our control.

Distance: Total driving distance (including around sites) = 832km.

Includes:

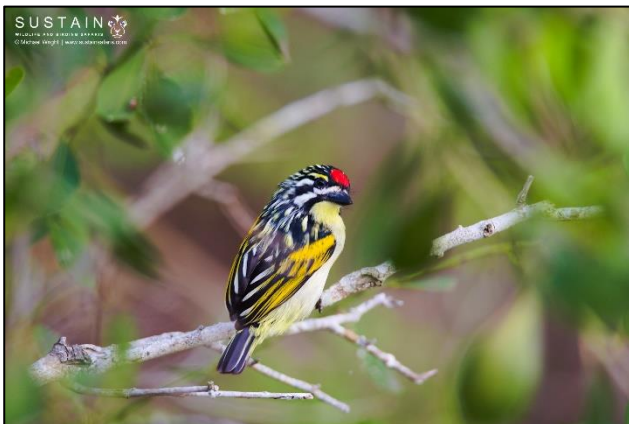
- Accommodation (may change subject to availability, in which case similar will be found);
- All breakfasts, lunches, dinners, tea and coffee;
- Ground transport – max 7 participants and 1 guide per minibus vehicle;
- Bottled water in vehicles whilst travelling – 2 per person per day;
- Entrance fees;
- Conservation levies;
- Personalized checklists;
- Specialist guide fees – 1 morning with a local site guide in the North Coast region, and fig forest walk in uMkhuze Game Reserve.

Excludes:

- All airfares;
- Travel and medical insurance;
- All drinks;
- Optional excursions where applicable;
- Gratuities;
- Items of a personal nature.

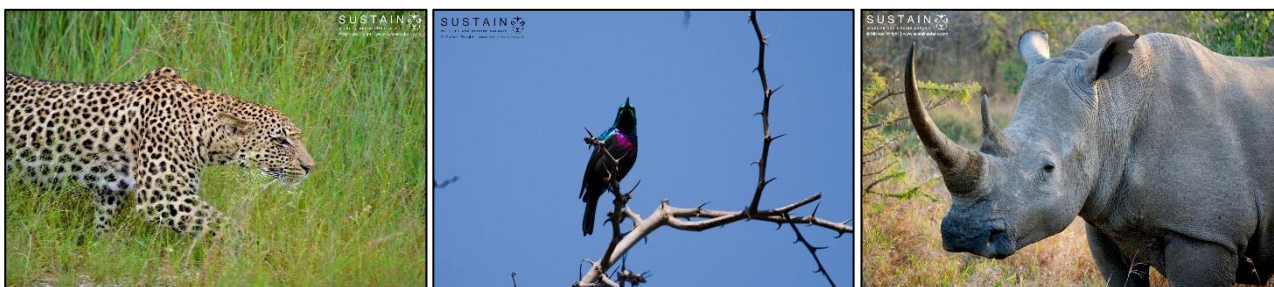
Note:

- Minimum of 4 participants per vehicle required to undertake the trip. If fewer, price will be slightly more;
- Tour starts and ends either from King Shaka International Airport or Umhlanga Rocks;
- This itinerary is subject to change due to weather conditions at the time and other factors beyond our control;
- The species mentioned in the itinerary represent only some of those we may possibly view on the tour, however, none of these can be guaranteed even though every effort will be made where possible to locate them. A full list of possible species appears on your checklist, although vagrants and rarities may also surprise us.



2. Tour Highlights

- *Group size:* maximum of 7 participants and 1 guide per vehicle.
- *Birding in brief:* Sightings goal of 250+. Excellent variety of birds to be seen, with a good chance of large birds of prey and many special and endemic species.
- *Wildlife in brief:* Sightings goal of 40+ mammals. Excellent variety of mammals, reptiles, amphibians and butterflies to be seen across a wide variety of habitats. iSimangaliso Wetland Park offers a good chance of the Big 5.
- *Areas visited:* Dlinza, Ongoye, St Lucia, iSimangaliso (Eastern and Western Shores), Bonamanzi, Nibela Peninsula, Muzi Pan, Mkhuze, Umlalazi, Amatikulu, Sappi Stanger Hide.
- *Expected weather conditions:* Subtropical with occasional rain, hot most of the time. Rain is possible, usually in the form of summer convection thunderstorms, and cool wet weather is possible in the event of a cold front moving up from the south.
- *Tour tempo:* medium, optional mid-day breaks (advisable on hot days), no serious walking.
- *Accommodation standards:* medium – private guesthouses and lodges, and public rest camps.
- *Top birds:* Southern Bald Ibis, Scaly-throated Honeyguide, African Emerald Cuckoo, Greater Painted-snipe, Pied Avocet, Cape Teal, Cape Shoveler, Black Coucal, Palm-nut Vulture, Southern Brown-throated Weaver, Black-throated Wattle-eye, Swamp Nightjar, Narina Trogon, Crested Guineafowl, Orange-breasted Waxbill, Cape Longclaw, African Finfoot, Goliath Heron, Eastern Bronze-naped Pigeon, Spotted Ground-Thrush, Green Barbet, Striped Pipit, Plain-backed Pipit, Black-rumped Buttonquail, Mangrove Kingfisher, African Black Oystercatcher, Southern Banded Snake-Eagle, Green Malkoha, Livingstone's Turaco, Brown Scrub-Robin, Green Twinspot, Neergaard's Sunbird, Purple-banded Sunbird, Lemon-breasted Canary, Pel's Fishing-Owl, Verreaux's Eagle-Owl, Bateleur, Rosy-throated Longclaw, African Broadbill, Woodward's Batis, Pink-throated Twinspot, Secretarybird, African Pygmy Goose, Rudd's Apalis, African Broadbill, Lappet-faced Vulture, Southern Ground-Hornbill, Stierling's Wren-Warbler, African Pygmy-Kingfisher, Half-collared Kingfisher.
- *Mammal viewing:* Lion, Leopard, Elephant, Black Rhino, White Rhino, Buffalo, Cheetah, African Wild Dog, Spotted Hyena, Pangolin, Porcupine, Hippo, Giraffe, Serval, Side-striped Jackal, Caracal, Samango Monkey, Thick-tailed Bushbaby, Suni, Red Duiker, Blue Duiker, Cape Clawless Otter, Honey Badger, Bushpig, other general game, and good chances for uncommon smaller species.
- *Special interests:* birding, wildlife, photography.
- *Specialist guiding:* Community guide for a morning on the North Coast. Fig Forest Walk in uMkhuze.
- *Add-ons:* this tour can be combined with extensions to the Drakensberg and Midlands region of KwaZulu-Natal, as well as Wakkerstroom and the Kruger National Park in Mpumalanga.



3. Birding and Wildlife Regions

3.1. Day 1: Zululand & Elephant Coast – 265km

Habitat types: Coastal Forest, Pans, Estuaries, Moist Grassland, Savanna and Woodland

Route: St Lucia Estuary and Forest
iSimangaliso Eastern Shores
iSimangaliso Western Shores
St Lucia – 1 night accommodation.

Target birds:

Sooty Tern, Caspian Tern, Little Tern, Sandwich Tern, Yellow-billed Stork, Goliath Heron, African Black Oystercatcher, Black Crake, Greater Painted-snipe, Lesser Sand Plover, Greater Sand Plover, Western Yellow Wagtail, Baillon's Crake, Common Whimbrel, Little Rush-Warbler, Lesser Swamp-Warbler, Sedge Warbler, African Marsh-Harrier, Southern Brown-throated Weaver, Black-crowned Night-Heron, Striated Heron, Black-throated Wattle-eye, Southern Banded Snake-Eagle, African Wood-Owl, Corn Crake, Lesser Moorhen, Swamp Nightjar, Narina Trogon, Green Malkoha, Green Twinspot, Livingstone's Turaco, Woodward's Batis, Grey Sunbird, Gorgeous Bush-Shrike, Black-bellied Starling, Blue-mantled Crested-Flycatcher, Yellow-streaked Greenbul, Brown Scrub-Robin, European Honey Buzzard.

Target mammals:

Leopard, Elephant, White Rhino, Black Rhino, Cape Buffalo, Hippo, Spotted Hyena, Honey Badger, Serval, Side-striped Jackal, Red Duiker, Blue Duiker, Kudu, Nyala, Bushbuck, Giraffe, Waterbuck, Common Reedbuck, Bushpig, Samango Monkey, Bottlenose Dolphin.



3.2. Days 2 and 3: Elephant Coast – 170km

Habitat types: Coastal Forest, Sand Forest, Riverine Forest, Pans, Savanna and Woodland

Route: Nibela Peninsula
Muzi Pan
Mkhuze Fig Forest
Mkhuze Nsumo Pan
Mkhuze – 2 nights' accommodation. Includes fig forest walk.

Target birds:

Pel's Fishing-Owl, Verreaux's Eagle-Owl, Bateleur, Rosy-throated Longclaw, African Broadbill, Narina Trogon, Brown Scrub-Robin, Red-fronted Tinkerbird, Woodward's Batis, Green Twinspot, Pink-throated Twinspot, African Crowned Eagle, Secretarybird, Southern Banded Snake-Eagle, African Cuckoo-Hawk, African Wood-Owl, African Pygmy Goose, Great White Pelican, Black Heron, Purple Heron, Giant Kingfisher, African Marsh-Harrier, Denham's Bustard, Collared Pratincole, Senegal Lapwing, Western Osprey, Greater Flamingo, Lesser Flamingo, Livingstone's Turaco, Pale-crowned Cisticola, Lemon-breasted Canary, Caspian Plover, Yellow-bellied Eremomela, Grey Waxbill, Red-backed Mannikin, Pearl-spotted Owlet, Crested Guineafowl, Bearded Scrub-Robin, Eastern Nicator, Gorgeous Bush-Shrike,

Neergard's Sunbird, Purple-banded Sunbird, Rudd's Apalis, Klaas's Cuckoo, White-throated Robin-chat, Southern Brown-throated Weaver, African Yellow White-eye, Acacia Pied Barbet, Grey Tit-Flycatcher.

Target mammals:

Lion, Leopard, Cheetah, Elephant, White Rhino, Black Rhino, Cape Buffalo, African Wild Dog, Hippo, Spotted Hyena, Honey Badger, Suni, Red Duiker, Blue Duiker, Kudu, Nyala, Bushbuck, Giraffe, Waterbuck, Common Reedbuck, Thick-tailed Bushbaby.



3.3. Days 4 and 5: Zululand & North Coast – 170km

Habitat types: Coastal Grassland, Coastal Forest, Scarp Forest and Estuary

Route: Dlinza

Ongoye

Umlalazi

Sappi Stanger

Mtunzini – 1 night accommodation. Includes community guide for the morning.

Target birds:

Swamp Nightjar, Narina Trogon, Crested Guineafowl, Grey Waxbill, Grey Sunbird, Trumpeter Hornbill, Green Twinspot, Orange-breasted Waxbill, Cuckoo Finch, White-eared Barbet, Cape Longclaw, Small Buttonquail, Common Quail, African Fish-Eagle, African Crowned Eagle, African Cuckoo-Hawk, Black-chested Snake-Eagle, African Finfoot, Goliath Heron, Purple Heron, Southern Brown-throated Weaver, Eastern Golden Weaver, Eastern Bronze-naped Pigeon, Spotted Ground-Thrush, Chorister Robin-Chat, Green Barbet, Black-bellied Starling, Olive Bush-Shrike, Grey Cuckooshrike, Blue-mantled Crested-Flycatcher, Black-chested Snake-Eagle, Klaas's Cuckoo, Striped Pipit, Plain-backed Pipit, Black-rumped Buttonquail, Mangrove Kingfisher, African Pygmy-Kingfisher, Swamp Nightjar, Blue-mantled Crested Flycatcher, Green Malkoha, Yellow-streaked Greenbul.

Target mammals:

Bushbuck, Common Reedbuck, Giraffe, Plain's Zebra, Red Duiker, Blue Duiker, Hippo, Banded Mongoose, Samango Monkey.



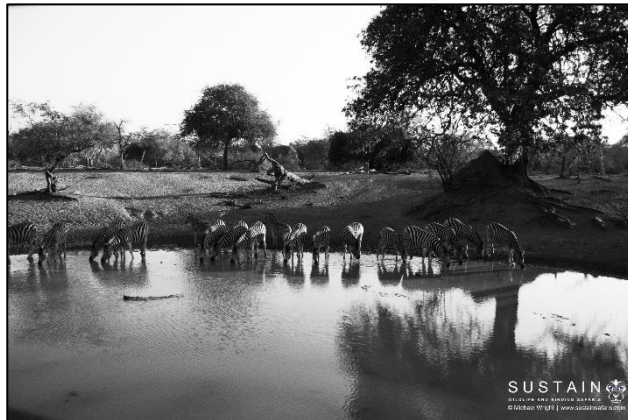
4. Trip Itinerary

Day	Accommodation*	Location	Habitats	Sites	Distance (kms)	Driving Time (hrs)
1	Amazulu Lodge – 1 night	St Lucia	Coastal grassland, Coastal forest, Lake and Estuary	St Lucia, iSimangaliso	265	3.5
2 & 3	Mantuma Camp – 2 nights	Mkhuze Game Reserve	Coastal forest, Sand forest, Riverine forest, Pans, Savanna and Woodland	Nibela Peninsula, Muzi Pan, Mkhuze	170	5 & 5
4	Ngoye Lodge – 1 night	Mtunzini	Coastal Grassland, Coastal forest, Scarp forest and Estuary	Ongoye, Umlalazi	255	3
5	Depart Mtunzini for King Shaka International Airport or Umhlnaga Rocks			Dlinza, Sappi Stanger	142	2

* Accommodation may change subject to availability, in which case similar accommodation will be found.

** Total driving distance (including around sites) = 832km.

Note: C = Catered, S/C = Self-catered



5. Accommodation

Note: Accommodation may change subject to availability, in which case similar accommodation will be found.

Day 1 – Amazulu Lodge

<https://amazululodge.com/>

AmaZulu Lodge has a warm African ambiance without sparing luxury. Entirely under thatch, even the specific fragrance of grass reminds you that you are in Africa. Offering 18 luxury en suite rooms, of which 2 are family rooms and 2 self-catering rooms (total of 20 rooms) with all facilities and amenities, a stylish reception, superb swimming pool, lapa breakfast area, boma and lounge deck overlooking the village and lush inner garden.



Amazulu Lodge offers you the opportunity to investigate the world Heritage Site surrounding this area of the Elephant Coast, celebrated for its magnificent splendour, where you will find long stretches of beaches fringed with protected unspoilt coastal forests.

St Lucia is where you will find yourself immersed in nature, offering an extravagant range of activities. The area boasts an unspoilt ecotourism destination playground with an untamed spirit. The beautiful Lake St Lucia lies on the coast, and the large coastal grasslands are home to a variety of large and small mammals, reptiles and birds, while the lake is home to hippos, crocodiles and an abundance of fish and birds. After dark the Hippos emerge from the lake to eat grass on the nearby coastal plains, and they occasionally wonder around the town too.

Days 2 and 3 – Mantuma Camp

<http://www.kznwildlife.com/Mantuma.html>

Mantuma is the resort serving the uMkhuze Game Reserve section of the iSimangaliso Wetland Park World Heritage Site. Mantuma is spread beneath a canopy of shady trees and the resort's relaxed atmosphere and comfortable facilities are the perfect backdrop to an enjoyable stay.



This 40,000ha public reserve, on the plains of the Elephant Coast, is well known for its atmosphere of peace and tranquillity, drawing many return visitors. A "Big 5" game reserve, uMkhuze is a typical

bushveld protected area, having great beauty and contrast in that it has extensive wetlands on its south eastern section. It is a world-renowned bird watching spot, with more than 420 recorded species on its bird list.

uMkhuze is home to wild dog, lion, buffalo, cheetah, both black and white rhino, elephant, and a multitude of plains game. These include impala, nyala, blue wildebeest, zebra and kudu. Amongst the less common, small antelope to be found are grey duiker, red duiker and the diminutive suni. Only Nsumo Pan is accessible to all visitors, and this is home to hippo, crocodile, pink-backed and white pelicans as well as an astonishing variety of other water birds according to season.

Day 4 – Ngoye Lodge

<https://www.safarinow.com/go/ngoyelodge/>

The nature rich surrounds of Ngoye Lodge make it a must for bird watches and nature lovers. The lush green gardens are alive with birdlife and create a peaceful getaway for our guests.

Ngoye's décor is stylish and harmoniously combines eco simplicity and luxury. Up to 10 people can be accommodated comfortably in five bedrooms for our bigger groups of guests. The rooms are also individually available for traveling business people or couples, for the midweek guests a self-help tropical breakfast is available. Each of the bedrooms has a TV, fridge, tea/coffee tray, workstation, office chair, Wifi and airconditioner.

The communal areas consist of two main living areas; an open-plan lounge and an entertainment area equipped with table tennis and a TV. The main living area includes a dining area, seating for eight people and easy access to the kitchen which is fully equipped for self-catering, including laundry facilities. The large outdoor veranda provides further space for relaxing and enjoying the tranquility of the indigenous garden.

The entire property is secured with electric fencing and the local security company is on call for guests' peace of mind. The parking area ample and secure. The lodge is surrounded by good restaurants and coffee shops and the small local shopping centre is within walking distance from the lodge. Experience Zululand hospitality at its best!



Day 5 – None

No accommodation required.



Address: 23 Beech Road, Glen Anil, Durban North, KwaZulu-Natal, South Africa, 4051

Cell: +27 83 670 1436

Fax: +27 86 551 5736

Email: info@sustainsafaris.com

Web: www.sustainsafaris.com

Facebook: SustainSafaris

Contact: Michael Wright

michael@sustainsafaris.com